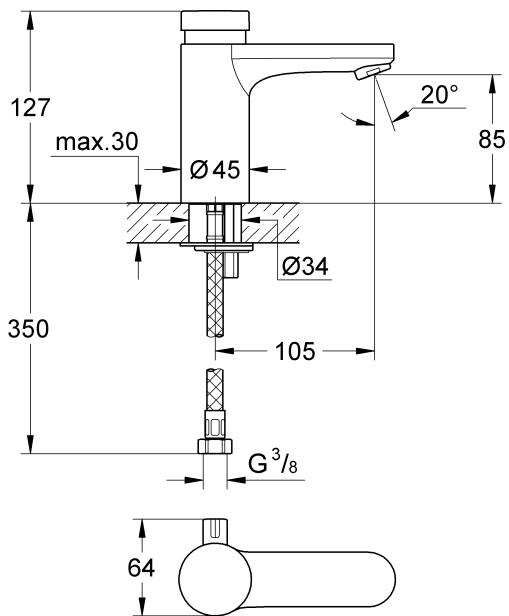
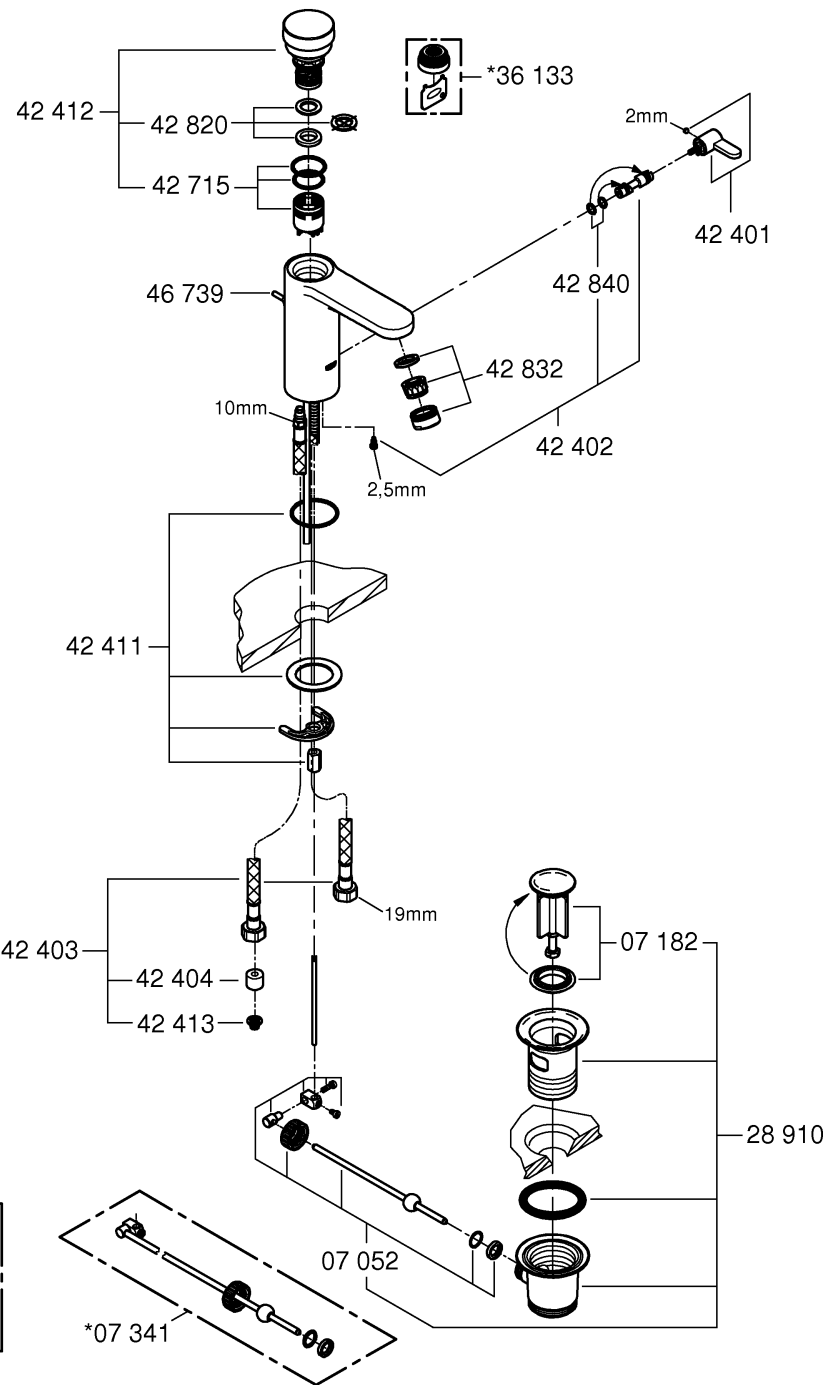
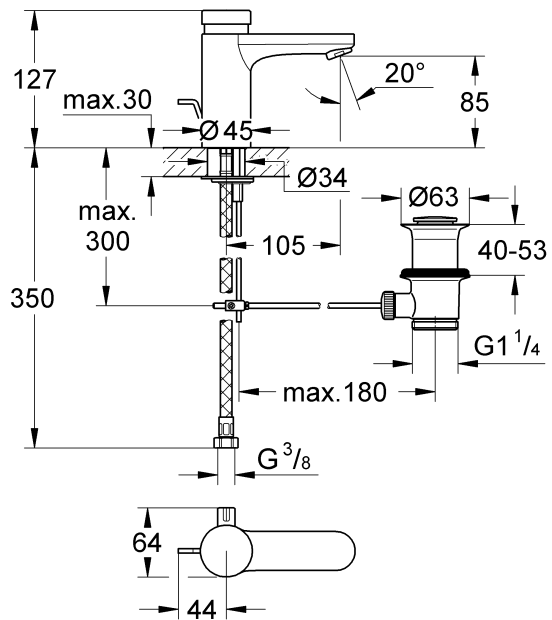


36 317



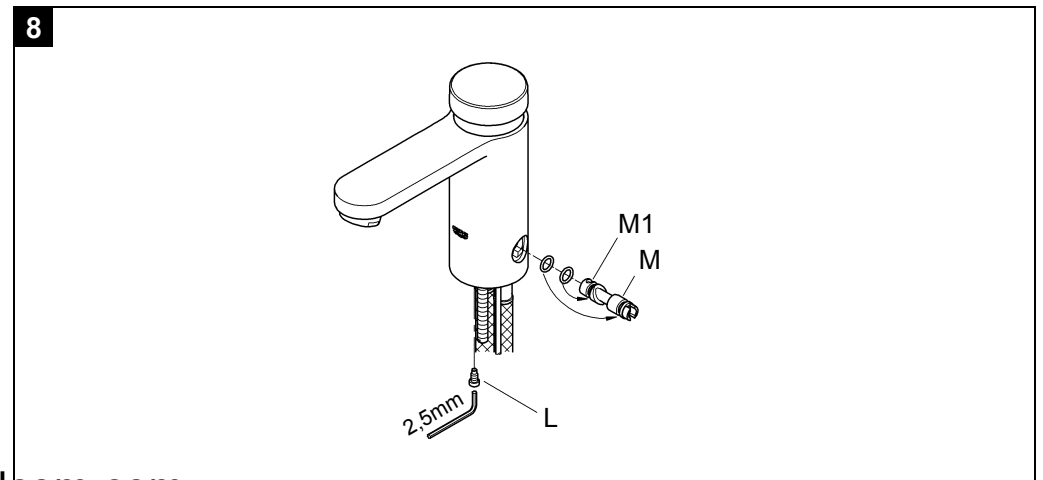
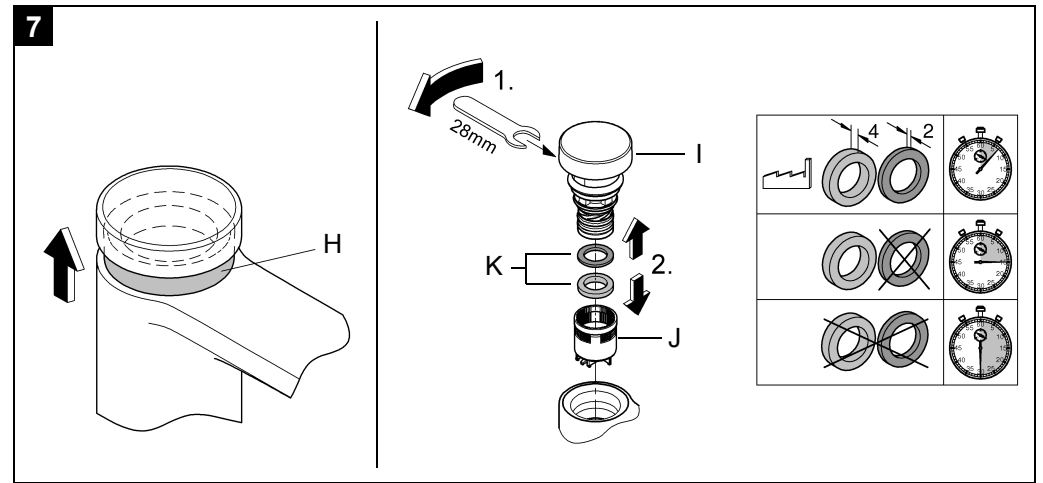
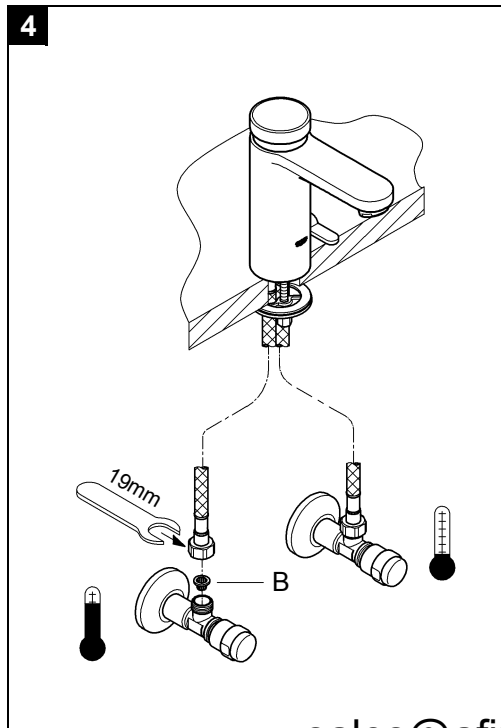
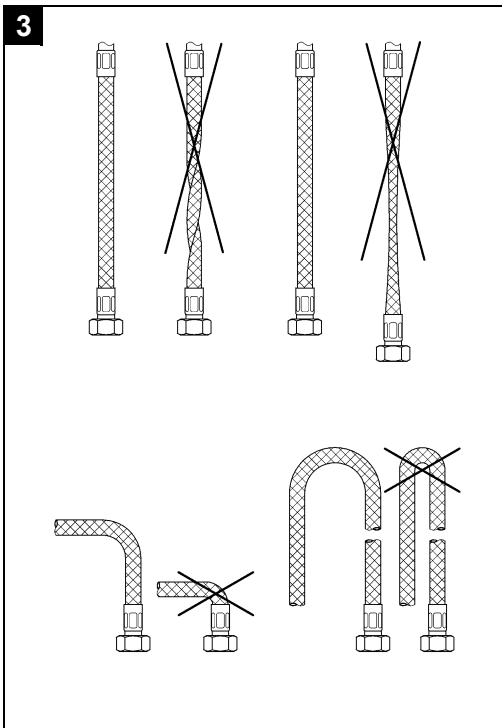
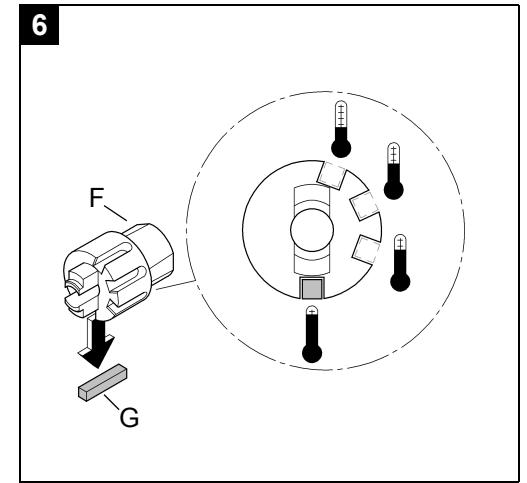
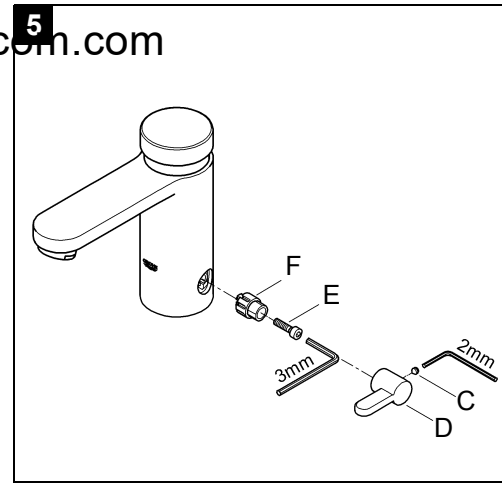
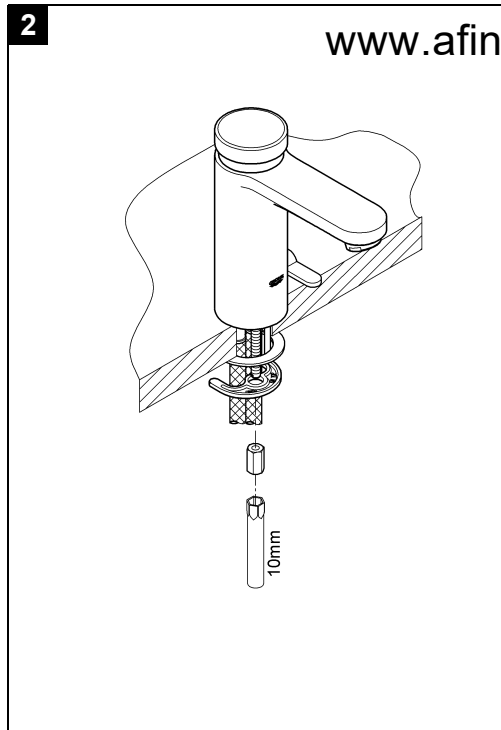
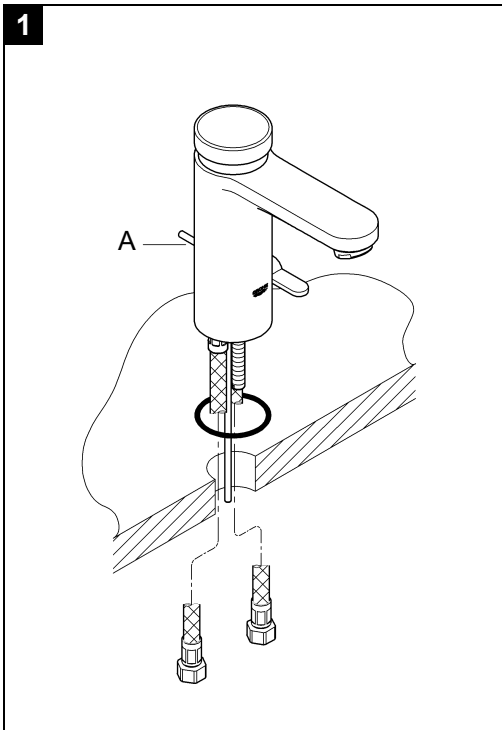
www.afindcom.com

36 318



Bitte diese Anleitung an den Benutzer der Armatur weitergeben!  
 Please pass these instructions on to the end user of the fitting!  
 S.v.p remettre cette instruction à l'utilisateur de la robinetterie!

sales@afindcom.com





## Application

Can be used in conjunction with:

- Pressurised storage heaters
- Thermally-controlled instantaneous heaters
- Hydraulically-controlled instantaneous heaters

Operation with unpressurised storage heaters is not possible.

## Technical data

- Flow pressure min. 0.5 bar / recommended 1 - 5 bar
- Operating pressure: max. 10 bar
- Test pressure: 16 bar

If static pressures exceed 5 bar, a pressure-reducing valve must be installed.

Avoid major pressure differences between hot and cold water supply.

- Flow rate at 3 bar flow pressure: ca. 6 l/min
- Hot water supply temperature: max. 70 °C
- Recommended (energy saving): 60 °C
- Running time: ca. 7 s/15 s/30 s
- Water connection cold - right  
hot - left

## Installation

**Flush pipes thoroughly before and after installation**  
(observe EN 806).

### Fitting

Refer to the dimensional drawings on fold-out page I.  
Lift rod (A) must be inserted into the mixer body during installation, see fold-out page II, Fig. [1].  
Fasten fitting to wash basin, see Figs. [1] to [3].

### Connection

The cold water supply must be connected on the right, hot water supply on the left.

Insert filters (B) and connect the hoses to the service valves, see Fig. [4].

**Open hot and cold water supply and check that connections are watertight.**

## Operation

By pressing down the pushbutton cap, water flow is initiated for the preset running time. After expiry of the preset time, the valve stops the flow of water automatically and without kickback.

## Setting temperature limiter

1. Remove screw (C) and detach lever (D), see Fig. [5].
2. Remove screw (E) and remove temperature limiter (F).
3. Remove feather key (G) from temperature limiter (F) and reinsert in the desired position. The grooves in temperature limiter (F) correspond to the temperatures that can be selected, see Fig. [6].

Assemble in reverse order.

## Setting the running time

1. Close water supply.
2. Push cover ring (H) upwards, see Fig. [7].
3. Unscrew cap (I) with cartridge.
4. Detach cylinder (J) from the cartridge.
5. The running time is changed by adding or removing insert rings (K):  
yellow + blue insert rings = ca. 7 s (factory setting)  
yellow insert ring = ca. 15 s  
no insert ring = ca. 30 s
6. Reattach cylinder (J) to the cartridge and refit the cartridge with cap (I).

## Maintenance

### Shut off hot and cold water supply.

Inspect and clean all components and replace if necessary.

### I. Remove and clean **mousseur (42 832)**

Assemble in reverse order.

### II. Cartridge, see Fig. [7].

1. Unscrew cap (I) with cartridge.
  2. Detach cylinder (J) from the cartridge and clean or replace.
- Assemble in reverse order.

### III. Mixer spindle, see Figs. [5] and [8].

1. Disconnect fitting from connections.
2. Remove fitting from wash basin.
3. Removal of lever (D) is as described in section "Setting temperature limiter", see Fig. [5].
4. Remove screw (L), see Fig. [8].
5. Pull out mixer spindle (M) and replace.

Assemble in reverse order.

**Screw (L) must engage in groove (M1) of mixer spindle (M).**

## Replacement parts

see fold-out page I (\* = special accessories)

## Care

For directions on the care of this fitting, please refer to the accompanying Care Instructions.